



AWH-10

WATER HAMMER ABSORBER FOR AIR APPLICATIONS

GENERAL FEATURES

The water hammer makes the suction smoothly and facilitates the impact of the water.

Water Hammer Absorb

It can be connected directly to pipe in different battery types. It has the effect of excellent water hammer absorption without blocking the fluid flow.

Easy Installation

It can be easily and freely mounted even in a narrow space. Select a direction for installation according to the location.

Working Conditions and Performance

Max. Working Pressure: 16 bar

Max. Working Temperature: 60°C

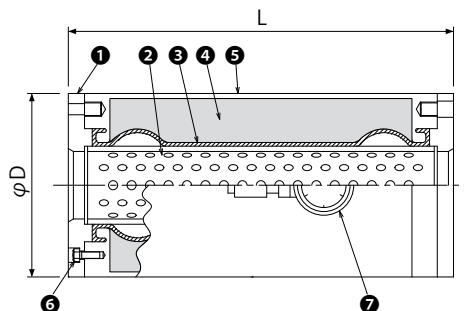
Before using the product, check that it is within the maximum operating pressure and temperature range.

Perforated Pipe: The pipe can be inserted in series with regular flow by drilling in small holes.

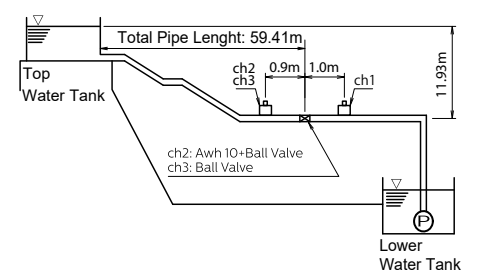
Elastic Tube: When rubber is used outside the perforated pipe, it provides excellent elasticity and air tightness and is secured with flanges at both ends.

Air Room: There is an air chamber between the pipe and the sheath. The air chamber is pre-filled to 0.5 MPa.

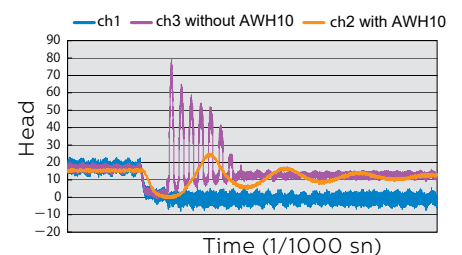
Structure



Water Hammer Pressure Comparison



Comparison of Water Hammer



From the above comparison table, the water hammer pressure with AWH-10 installation is 1.5 times of the water pressure before shielding with the ball valve, and 4.3 times in case of without AWH-10 installation. So the water hammer difference between with and without AWH-10 is about 68% attenuated. In addition, according to the long period of the water hammer waveform, the relaxation of the pressure and the shock force due to water hammer could be confirmed.

AWH-10 WATER HAMMER ABSORBER FOR AIR APPLICATIONS

Structure

No.	Parts	Material	No.	Parts	Material
1	Flange	SS400	5	Case	S20C
2	Perforated Tube	PVC-U	6	Screw	S45C
3	Elastic Tube	CSM	7	Pressure Gauge	----
4	Air Chamber	Air is filled during delivery.			

The above materials are for standard products.

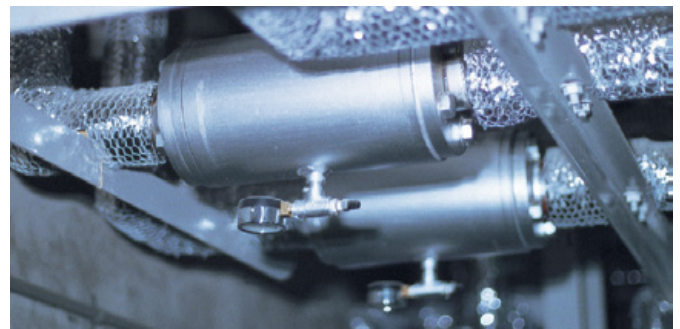
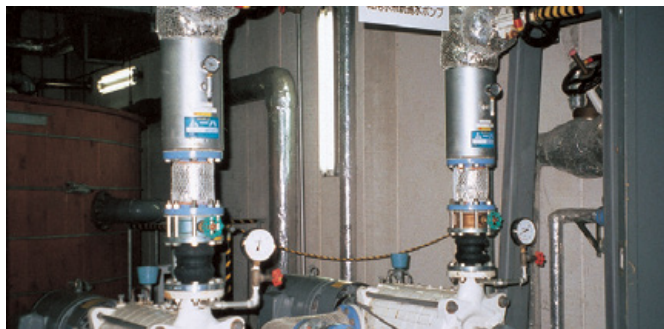
Flange Dimension	Standard	PN 16		
	Changeable	O	PN25	
		O	JIS10K	
		O	JIS20K	
O		ANSI 150LB		
Material	Standard	SS400		
	Changeable	X	FCD450	
		O	SUS304	
		O	SUS316	
		X	PVC	

Model	Nominal Dia.	Dimen. (mm)		Capacity of Air Chamber (ℓ)	Weight (kg)
		ØD	L		
		MH-25	25		
MH-50	50	168	270	3	16
MH-80	80	194	380	6	28
MH-100	100	219	440	8	36
MH-125	125	273	560	16	66
MH-150	150	325	640	27	97

- Bolts are provided.
- The mass and air chamber capacity is for standard products with PN16 flanges supplied here.

Performance

When the pressure wave that generates water hammer passes through the AWH-10, its pressure is transmitted to the tube through the pipe. The tube that keeps balance in the normal pressure is instantly swollen due to its elasticity, and serves to absorb the water hammer.



HEAD OFFICE - FACTORY

Atatürk Sanayi Bölgesi Hadımköy Mahallesi Mustafa İnan Caddesi No: 44 Arnavutköy - İSTANBUL
Tel: +90 212 771 01 45 (pbx) | Fax: +90 212 771 47 27
info@ayvaz.com | www.ayvaz.com

Cona
Caserta/Italy
Tel: +39 0823 187 3988
rmolaro@ayvaz.com

Ayvaz Germany
Viernheim/Germany
Tel: +49 62046014399
germany@ayvaz.com

Ayvaz Ukraine
Kiev/Ukraine
Tel: +380 44 390 57 57
info@ayvaz.com.ua

Tricorr
Warsaw/Poland
Tel: +48 530 030 810
+48 533 603 335
tricorr@tricorr.eu

Ayvaz Azerbaijan
Baku/Azerbaijan
Tel: +99 (455) 579-84-32
ahayatov@ayvaz.com

Ayvaz Egypt
Cairo/Egypt
Tel: +20 122 819 78 29
andrew.eid@ayvaz.com

Ayvaz Gulf
Dubai/U.A.E
Tel: +971 563550822
+971 501306871
mideast@ayvaz.com

Ayvaz China
Ningbo/China
Tel: +86 152 5830 7361
msahin@ayvaz.com

Ayvaz Kazakhstan LLP
Almaty/Kazakhstan
Tel: +7 (727) 327 97 57
info_kz@ayvaz.com

Ayvaz N
Ispirih/Bulgaria
Tel: +359 8431 27 32
office@ayvaz-n.eu

Ayvaz Serbia
Belgrade/Serbia
Tel: +381 61 658 70 52
yakbiyik@ayvaz.com

Ayvaz Vietnam
HCMC/Vietnam
Tel: +84 89 8508345
ggursoy@ayvaz.com

Ayvaz Americas
Rhode Island/USA
Tel: +1 401 737 8380
americas@ayvaz.com